

MOBILELEASE MODULAR SPACE INC.

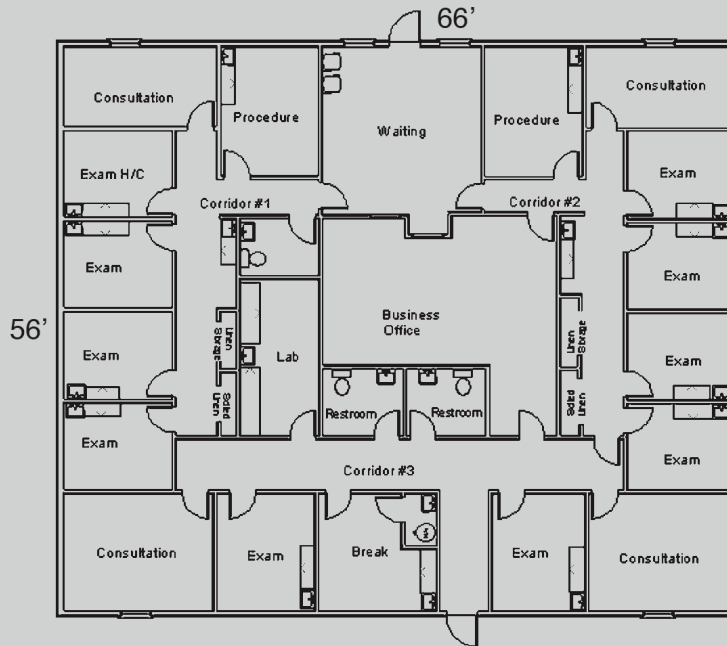
137 Crown Point Rd. Thorofare, NJ 08086

www.mobileasemodular.com

P: 888-649-6007

F: 856-686-9240

MODEL NUMBER	BUILDING USE	BUILDING SIZE	SQUARE FOOTAGE
MED-040	HEALTHCARE	56'X66'	3,696 sq.ft.



SPECS:

Exterior Siding: 7/16 Smart Panel

Interior Walls: Vinyl Covered Gypsum

Ceiling: Suspended

Floor: Carpet or Tile

HVAC: Bard wall hung with Electric Heat Strips

Plumbing: (2) Restrooms and multiple sinks

Electric: 120/240V, single phase

Windows: (6) 24x60 vertical slider/(1) 36"x36" sliding receptionist window

This available modular building is subject to availability. Listed dimensions may vary and are based on nominal sizes. Please contact Mobilelease Modular Space, Inc. for pricing and to receive a formal proposal with complete specifications, drawings, and for additional delivery and installation details. The floor plan and specifications can be modified if necessary.

www.mobileasemodular.com