

# MOBILEASE MODULAR SPACE INC.

137 Crown Point Rd. Thorofare, NJ 08086

[www.mobileasemodular.com](http://www.mobileasemodular.com)

P: 888-649-6007

F: 856-686-9240

MODEL NUMBER	BUILDING USE	BUILDING SIZE	SQUARE FOOTAGE
EDU-0080	EDUCATION	60'X112'	6,720 sq.ft.



## SPECS:

**Exterior Siding:** *7/16 Smart Panel*

**Interior Walls:** *Vinyl Covered Gypsum*

**Ceiling:** *Suspended*

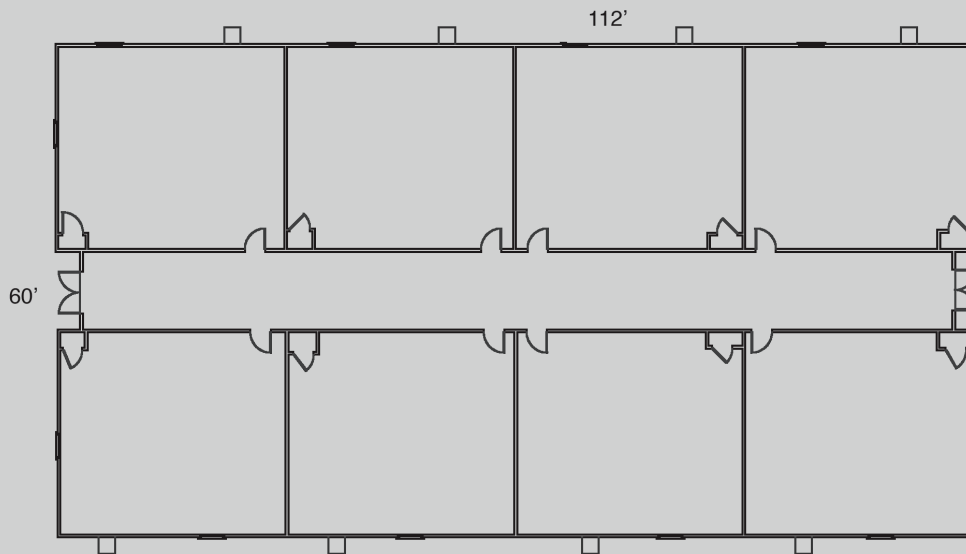
**Floor:** *Carpet or Tile*

**HVAC:** *(8) Three Ton/15KW*

**Plumbing:** *None*

**Electric:** *(8) 150 AMP, single phase*

**Windows:** *(16) 46"x27" Horizontal Sliders*



This available modular building is subject to availability. Listed dimensions may vary and are based on nominal sizes. Please contact Mobilease Modular Space, Inc. for pricing and to receive a formal proposal with complete specifications, drawings, and for additional delivery and installation details. The floor plan and specifications can be modified if necessary.

[www.mobileasemodular.com](http://www.mobileasemodular.com)