

# MOBILELEASE MODULAR SPACE INC.

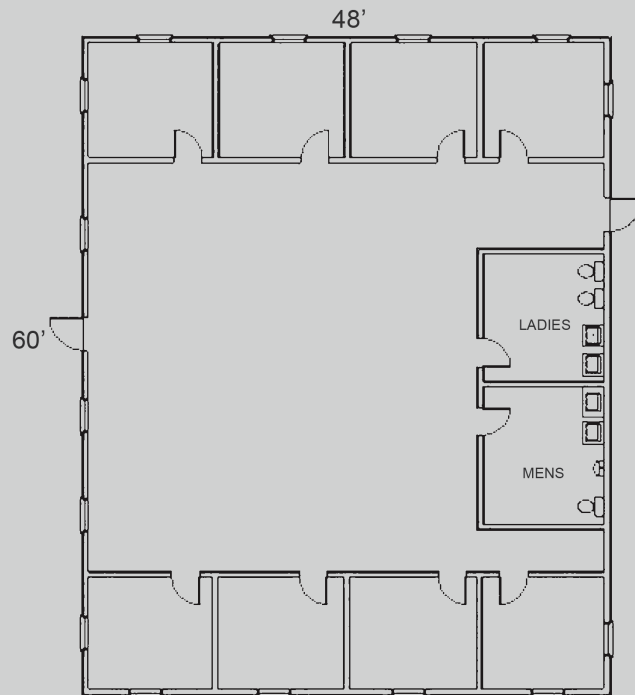
137 Crown Point Rd. Thorofare, NJ 08086

[www.mobileasemodular.com](http://www.mobileasemodular.com)

P: 888-649-6007

F: 856-686-9240

MODEL NUMBER	BUILDING USE	BUILDING SIZE	SQUARE FOOTAGE
COM-040B	COMMERCIAL	48'X60' w./bath	2,880 sq.ft.



## SPECS:

**Exterior Siding:** 7/16 Smart Panel

**Interior Walls:** Vinyl Covered Gypsum

**Ceiling:** Suspended

**Floor:** Carpet

**HVAC:** (4) Three Ton/15KW

**Plumbing:** (2) Handicap Bathrooms

**Electric:** (4) 150 AMP, single phase

**Windows:** (15) 24"x53" Vertical Sliders

This available modular building is subject to availability. Listed dimensions may vary and are based on nominal sizes. Please contact Mobilelease Modular Space, Inc. for pricing and to receive a formal proposal with complete specifications, drawings, and for additional delivery and installation details. The floor plan and specifications can be modified if necessary.

[www.mobileasemodular.com](http://www.mobileasemodular.com)