

# MOBILELEASE MODULAR SPACE INC.

137 Crown Point Rd. Thorofare, NJ 08086

[www.mobileasemodular.com](http://www.mobileasemodular.com)

P: 888-649-6007

F: 856-686-9240

MODEL NUMBER	BUILDING USE	BUILDING SIZE	SQUARE FOOTAGE
COM-021B	COMMERCIAL	24'X60' w./bath	1,440 sq.ft.



## SPECS:

**Exterior Siding:** 7/16 Smart Panel

**Interior Walls:** Vinyl Covered Gypsum

**Ceiling:** Pre-finished

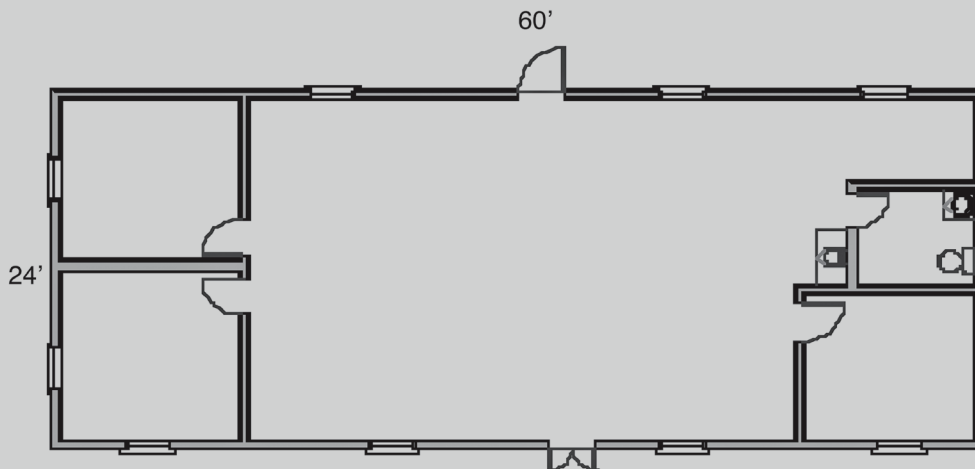
**Floor:** Carpet

**HVAC:** (2) Three Ton/15KW

**Plumbing:** (1) Handicap Bathroom

**Electric:** (2) 150 AMP, single phase

**Windows:** (9) 24"x53" Vertical Sliders



This available modular building is subject to availability. Listed dimensions may vary and are based on nominal sizes. Please contact Mobilelease Modular Space, Inc. for pricing and to receive a formal proposal with complete specifications, drawings, and for additional delivery and installation details. The floor plan and specifications can be modified if necessary.

[www.mobileasemodular.com](http://www.mobileasemodular.com)